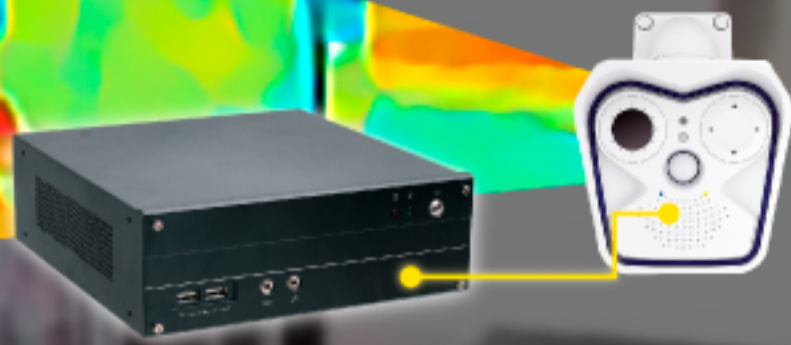


DFI

Design For Innovation



Smart Thermal Imaging Solution

DFI's iMage Smart Thermal Imaging System provides automatic fever detection, recording and sending alarm as well as reducing queue-up and staff allocated for entrance control.



ST102-CS
Thermal Imaging System

VMS
Embedded

- Alarm Functions
- Quick Search
- Heterogeneous Integration

iMage-EV

Entry-level



ST102-CS pairs with Thermal Camera

1. Up to 3 detection areas (any over-heat objects can be detected)
2. Detection distance: 1.5 to 2m
3. Object temperature range $-20^{\circ}\text{C} \sim 150^{\circ}\text{C}$

iMage-M

Advanced



ST102-CS pairs with Thermal Camera

1. Up to 20 detection areas (any over-heat objects can be detected)
2. Detection distance: 2.5 to 5m
3. Extended Applications: fire detection, electrical fence, etc.

iMage-F

Multi-face



ST102-CS pairs with Thermal Camera

1. Especially detect human face
2. Up to 30 people at once
3. Detection distance: 2.5 to 5m



DFI

Design For Innovation



iMage - EV

DFI's Smart Thermal Imaging System iMage-EV is an entry-level package for single-person fever detection, featuring DFI's ST102-CS high performance embedded computer and a thermal camera that simultaneously detects up to 3 areas within 1.5 to 2 meters.

Single-Person Fever Detection

Image Streaming Format		MJPEG / H.264 / H.265
Image Modes		Thermal, Visual
Thermal Sensitivity/NETD		<40mK
Accuracy		Max. $\pm 2\%$
Object temperature range		-20°C to 150°C
Encapsulation		IP67
Resolution		RGB: 1600 x 1200 ; IR:160 x 120 pixels
Temperature Measurement		Set up Detection Zones / points (up to 3 zones / 3 points)

Once temperature abnormality is detected, the iMage-EV issues real-time alarms — CCTV video pop-up, warning sound, email notification, and etc. The iMage-EV, with a friendly UI, provides open APIs to integrate 3rd party systems, and help query information of certain events along with images.

ST102-CS Box PC

CPU		8th Gen Intel® Core™ i3-8100T Processor
Memory		DDR4 SODIMM 4GB
Storage		1 x 2.5" SATA 3.0 Drive bay
I/O		2 GbE, 6 USB, 2 x DP++, 1 x HDMI, 1 x optional slim ODD bay
Power		12V DC power input
Operating Temperature		-5~55° C
Operating System		Windows 10 IoT Enterprise
Warranty		Long Life Cycle Support, 2 years warranty



DFI

Design For Innovation

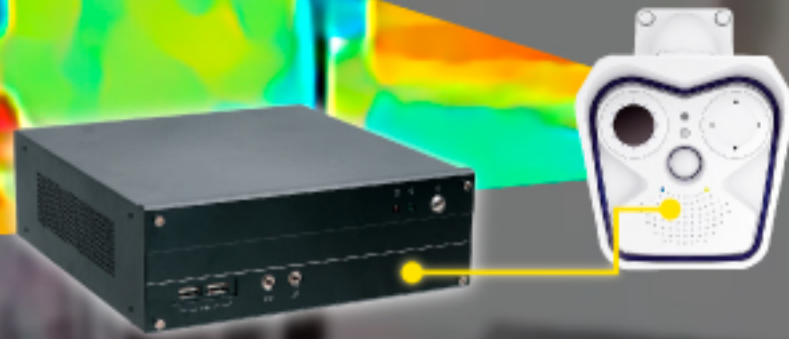


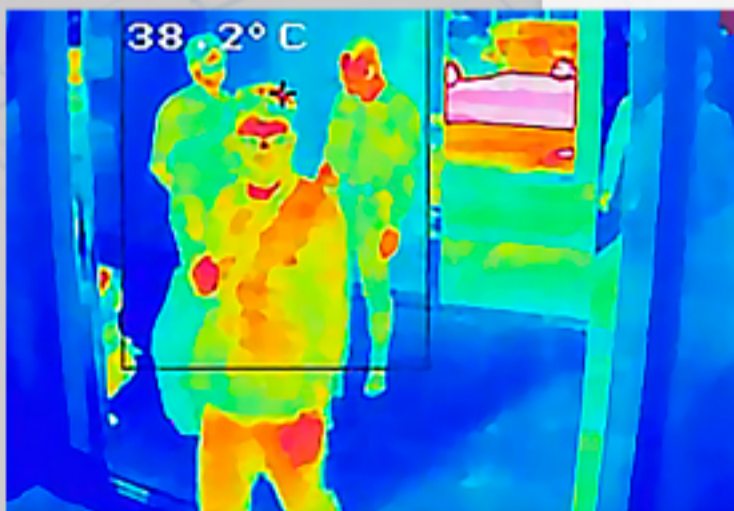
iMage - M

DFI's Smart Thermal Imaging System iMage-M is an advanced package for multi-person fever detection. Pairing DFI's ST102-CS industrial computer with a dual-lens thermal camera makes it possible to detect 20 areas within 2.5 to 5 meters. It is also future ready for extended security surveillance.

Once temperature abnormality is detected, the iMage-M issues real-time alarms — CCTV video pop-up, warning sound, email notification, and etc. The iMage-M with a friendly UI, provides open APIs to integrate 3rd party systems, and help query information of certain events along with images.

Multi-Person Fever Detection

Imaging Elements	RGB: 1/1.8" 6M CMOS / line-by-line scan Thermal: uncooled microbolometer (Infrared Range: 7.5 to 13.5μ m)
Resolution	RGB: 6 million (3072x2048) Thermal: 336 x 252 pixels
Image Streaming Format	MxPEG / MJPEG / H.264
Min. Illumination	RGB: 0.1 lux, 1/60 second
Thermal Image	Temperature scale or black/white
NETD	Standard: 50mK, <79mK (50mK means that temperature change is 0.05°C)
Accuracy	±0.5°C (2.5 ~ 5m)
Object temperature range	High sensitivity: -40 to 160°C Low sensitivity: -40 to 550°C
Detection Area	Up to 20 boxes
Encapsulation	Body: IP66 / IK06 Lens: IP66 / IK04 (B016 equal to IK06)



ST102-CS Box PC

CPU	8th Gen Intel® Core™ i3-8100T Processor
Memory	DDR4 SODIMM 4GB
Storage	1 x 2.5" SATA 3.0 Drive bay
I/O	2 GbE, 6 USB, 2 x DP++, 1 x HDMI, 1 x optional slim ODD bay
Power	12V DC power input
Operating Temperature	-5 ~ 55° C
Operating System	Windows 10 IoT Enterprise
Warranty	Long Life Cycle Support, 2 years warranty

DFI

Design For Innovation

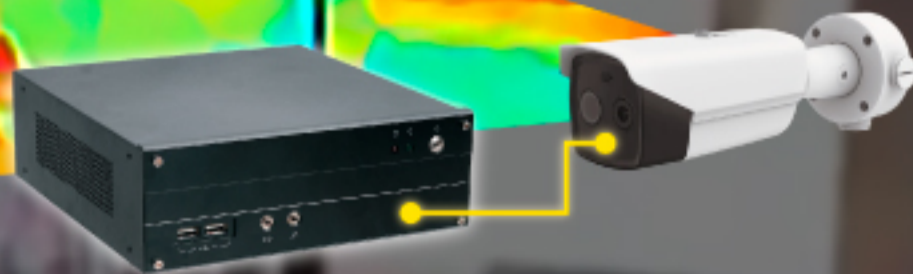


iMage - F

DFI's Smart Thermal Imaging System iMage-F is an advanced package for multi-face fever detection (face detection only). iMage-F pairs DFI's ST102-CS industrial computer powered with a thermal camera, detecting up to 30 people at once.

Multi-Face Fever Detection

Resolution		RGB: 2688 x 1520 ; IR: 384 x 288 pixels
Image Streaming Format		H.264 / H.265 / MJPEG
Encapsulation		IP66
Thermal Sensitivity/NETD		<40mK
Accuracy		±0.5°C (2.5 to 5m)
Object temperature range		30°C to 45°C
Detect object		Human face temperature, up to 30 persons
Image Modes		Thermal, Visual, MSX (IR-image with enhanced detail presentation)

Once temperature abnormality is detected, the iMage-F issues real-time alarms — CCTV video pop-up, warning sound, email notification, and etc. The iMage-F with a friendly UI, provides open APIs to integrate 3rd party systems, and help query information of certain events along with images.

ST102-CS Box PC

CPU		8th Gen Intel® Core™ i3-8100T Processor
Memory		DDR4 SODIMM 4GB
Storage		1 x 2.5" SATA 3.0 Drive bay
I/O		2 GbE, 6 USB, 2 x DP++, 1 x HDMI, 1 x optional slim ODD bay
Power		12V DC power input
Operating Temperature		-5~55° C
Operating System		Windows 10 IoT Enterprise
Warranty		Long Life Cycle Support, 2 years warranty

